



Tonkin & Taylor

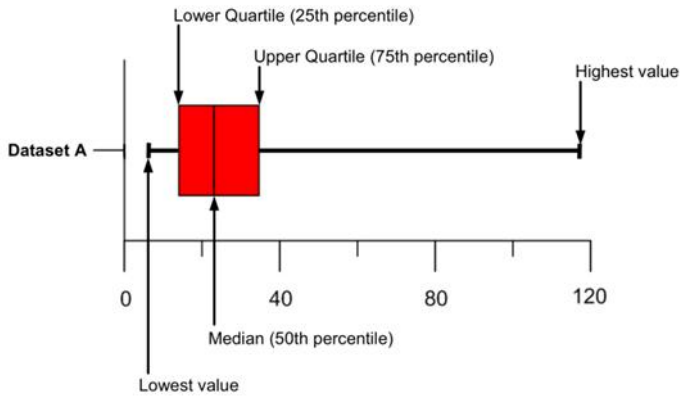
Appendix J: Calculated settlement indicator and LSN graphs

ENVIRONMENTAL AND ENGINEERING CONSULTANTS

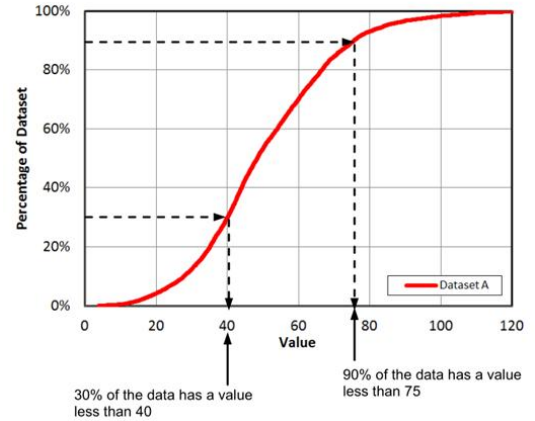


KEY

Box and Whisker Plots



Cumulative Frequency Plot



LEGEND

DBH Technical Category



TC2

Technical Category 2 - an area defined by MBIE where liquefaction damage is possible in a future large earthquake. Shallow geotechnical investigations may be required.



TC3

Technical Category 3 - an area defined by MBIE where liquefaction damage is possible in a future large earthquake. Deep geotechnical investigations may be required.



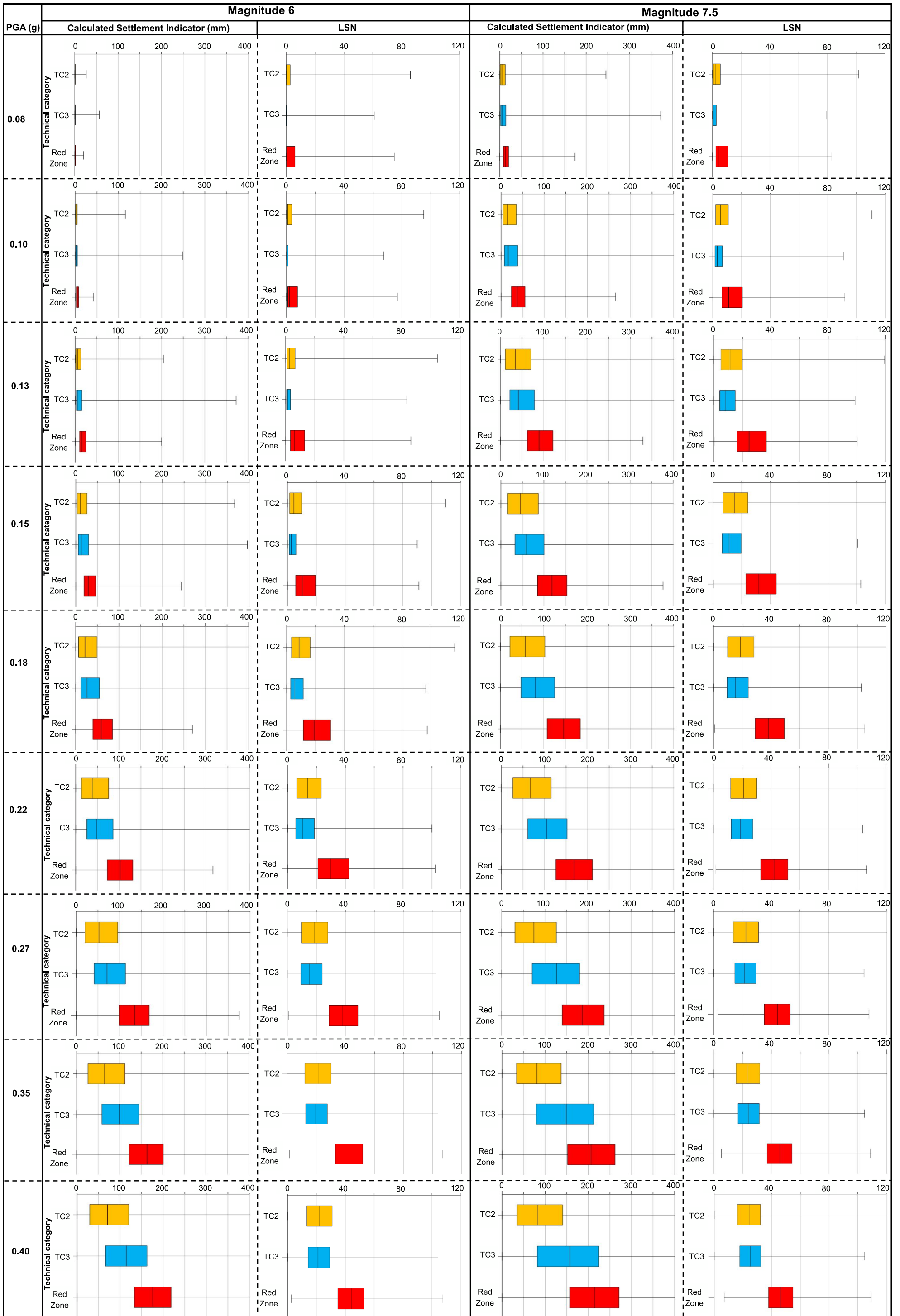
Red Zone

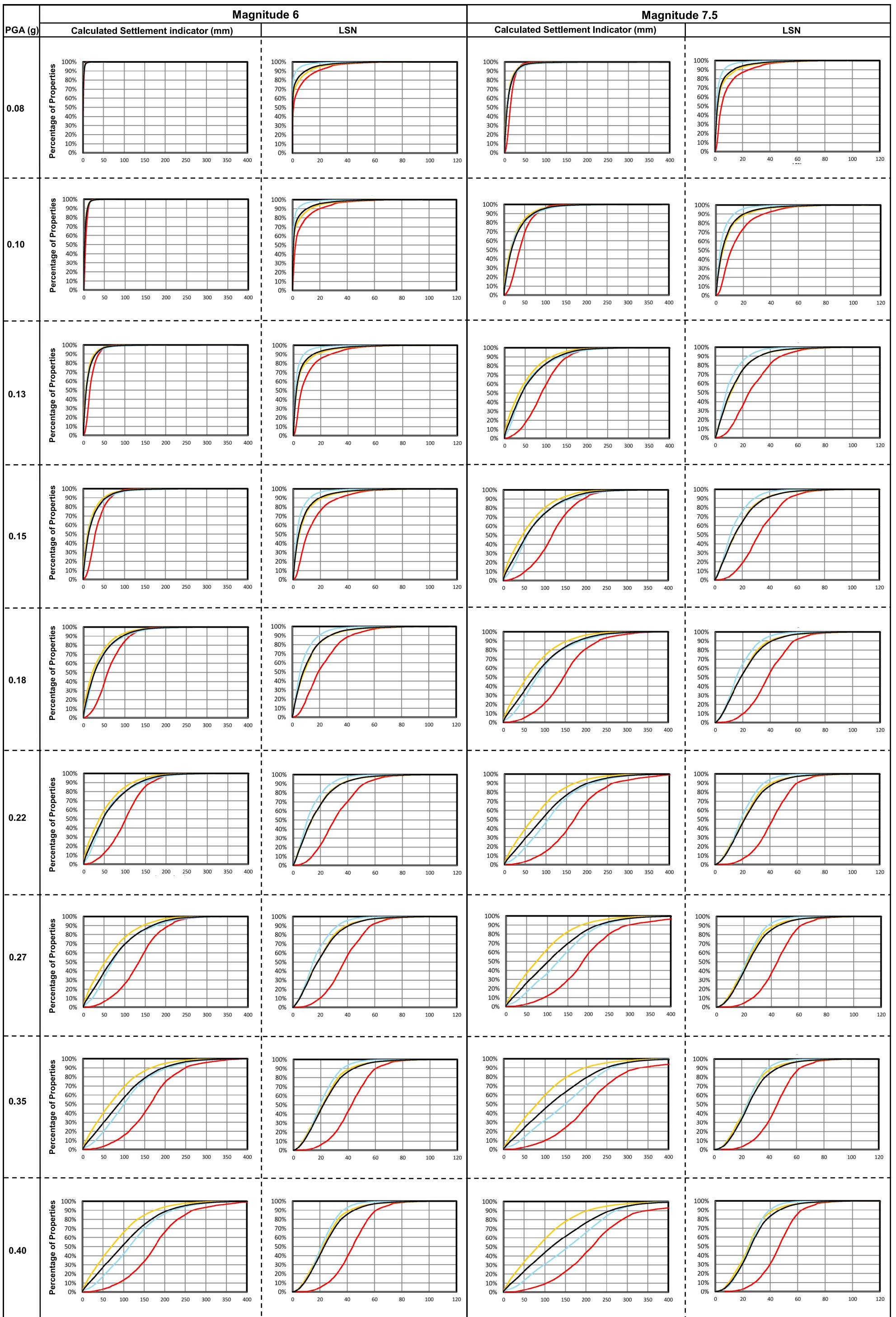
An area defined by the Government. Generally this area encompasses the most severely damaged land in Canterbury. Identified in this report as being highly vulnerable to liquefaction hazard.



Total

TC2, TC3 and Red Zone data combined into one complete dataset.





Magnitude 6

Magnitude 7.5

